

WASHINGTON JENKINS CIV. ENG.

(1)

(3)

-15-16
-15-16

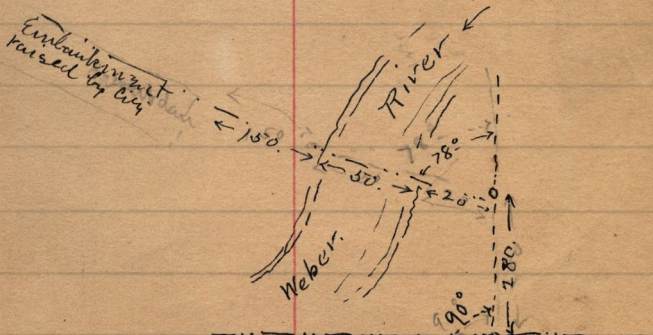
1170.
H. 5.2 - dist across N. End of H. J. Narrows
trach in S. E. 1/4 Sec. 30. T. 6. N. R. 1. W.

20 1/4

20 3/4

W.

898.



N. side of Weber City
in Pebble Park.
a opposite 32.00 lot 7, B 4.
B 3.